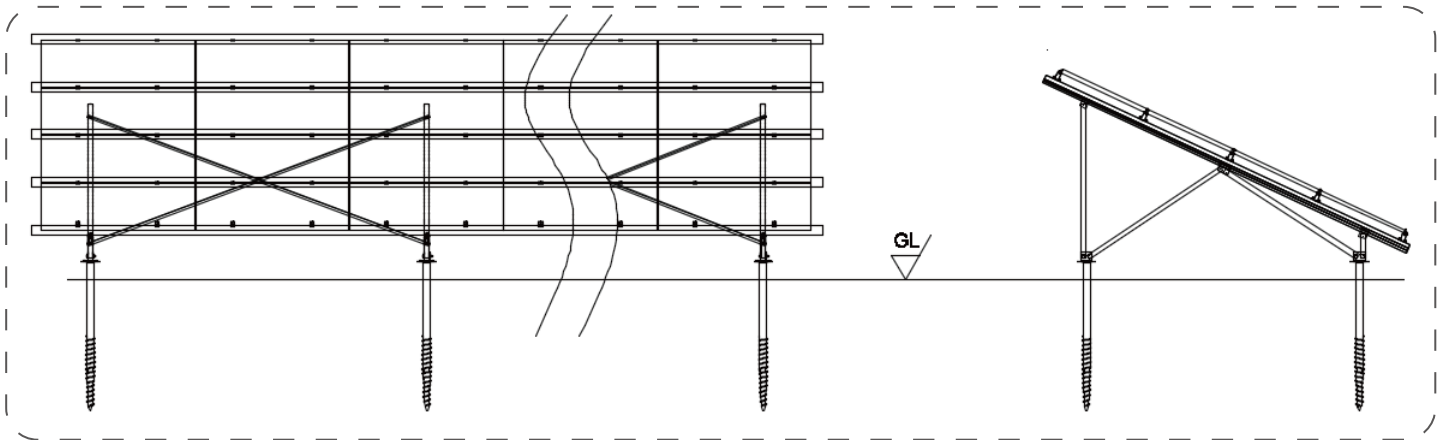


# Ground Mounting installation manual

**Better Design, Better Support, Better Price**

## Engineering drawing:



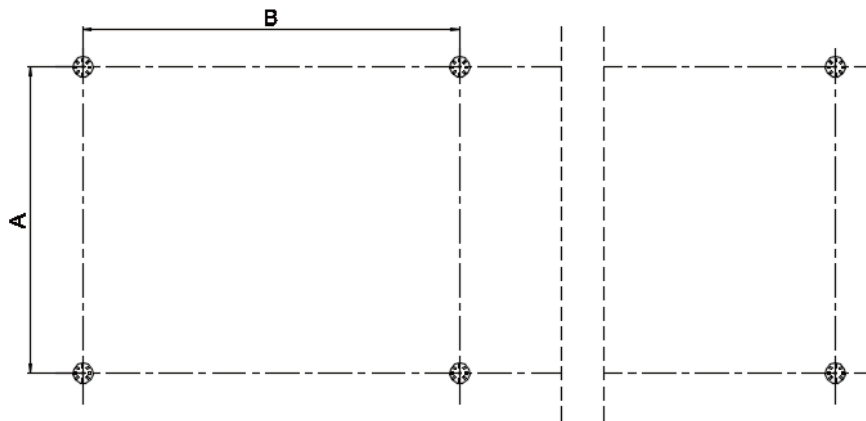
## Installation tool



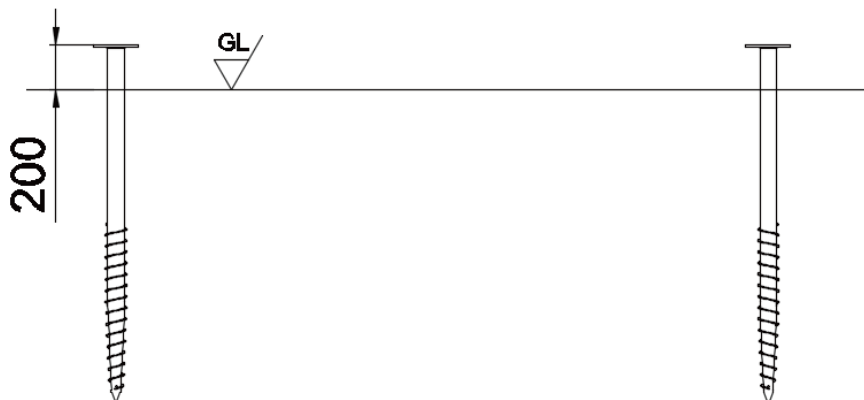
## Install Step:

### Positioning foundation.

According to the drawing, confirm the foundation space.

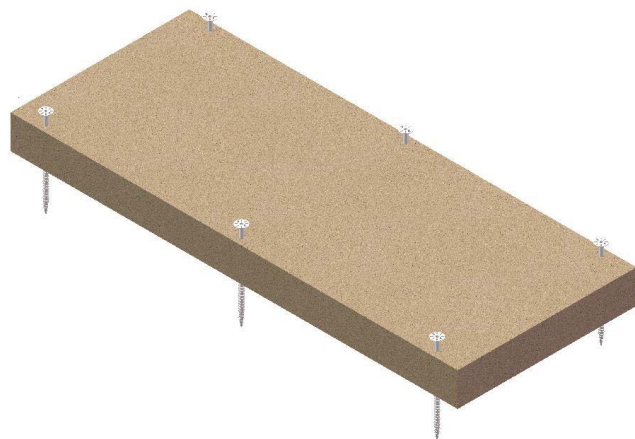


Foundation vertical view!

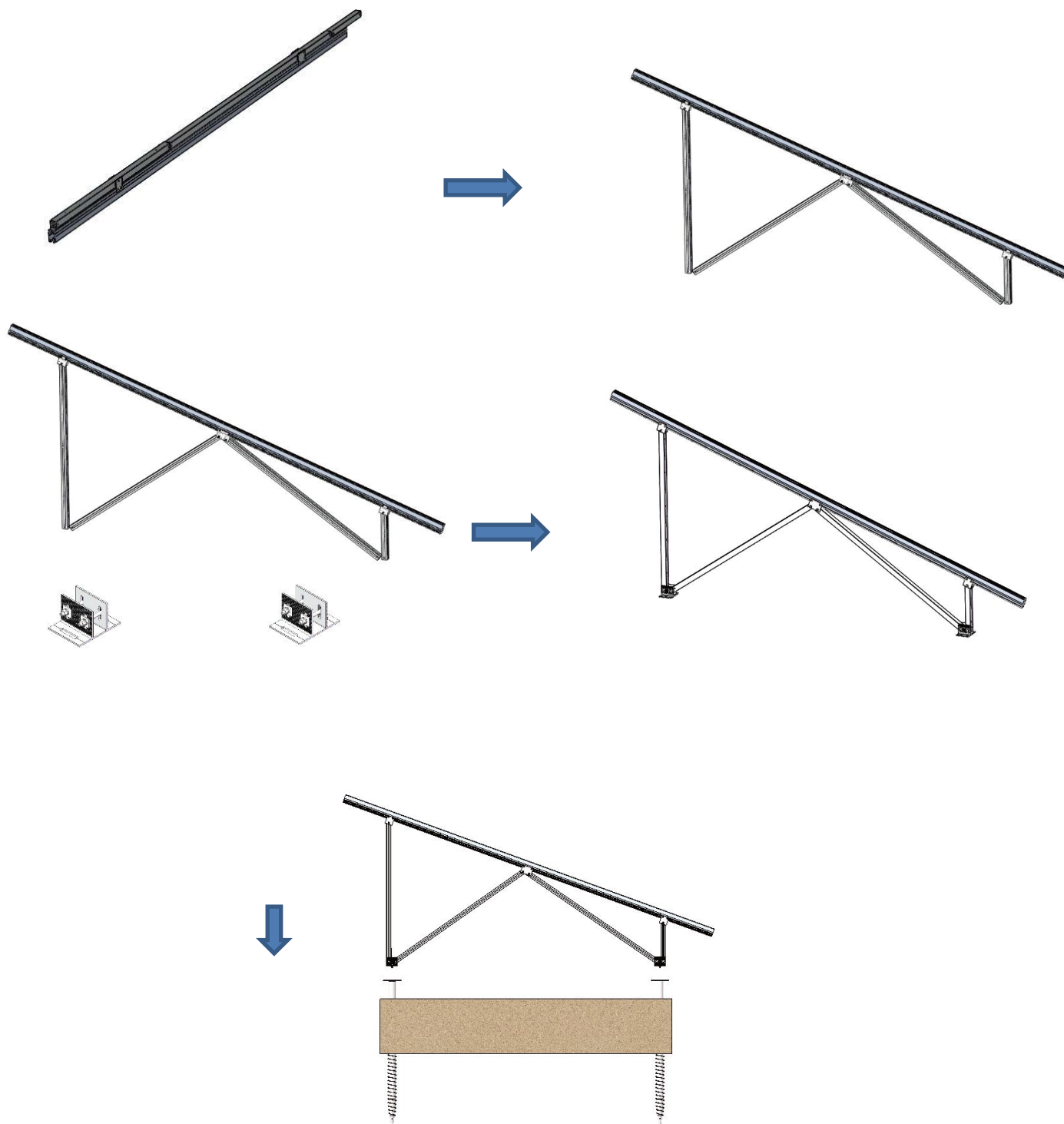


Foundation finished as below

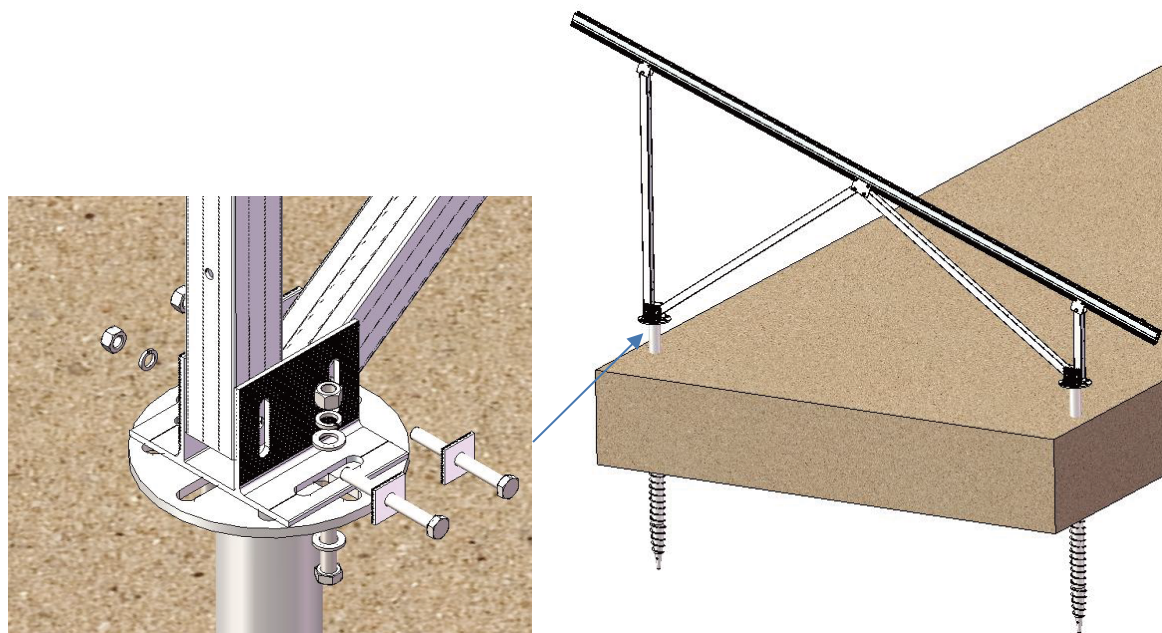
Foundation side view!



## Installing Pre-assembled Leg: Unfasten the pre-assembled leg.





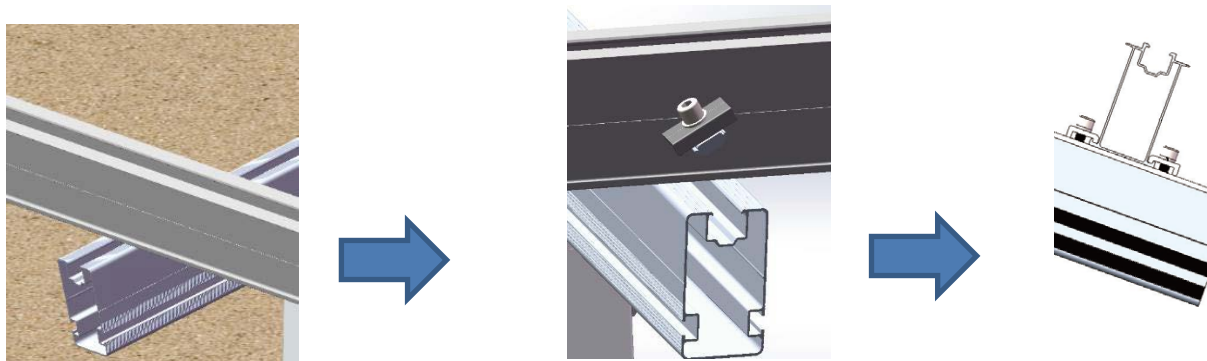


Repeat the above operation in accordance with the planned array layout.

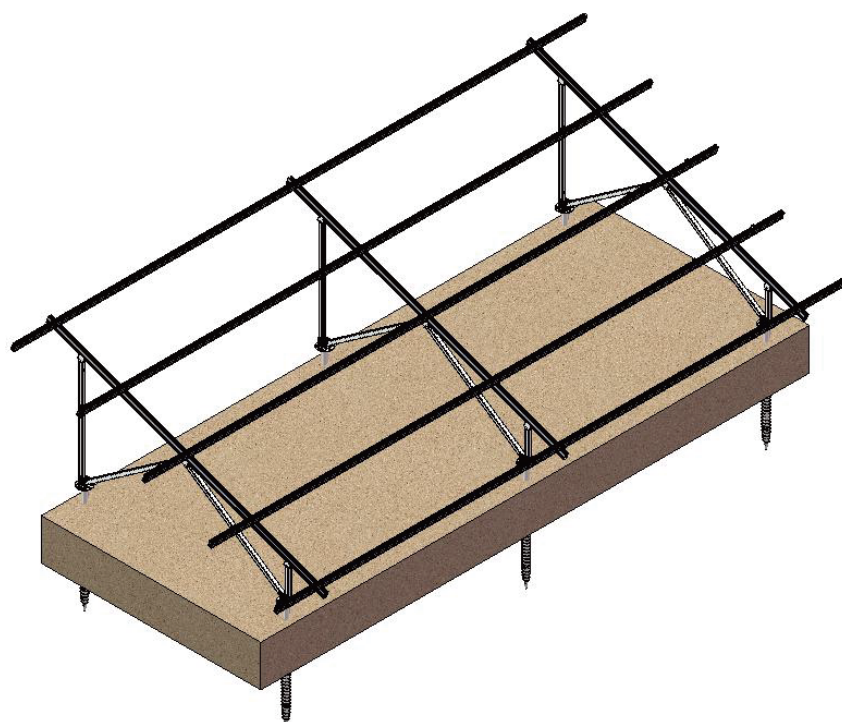
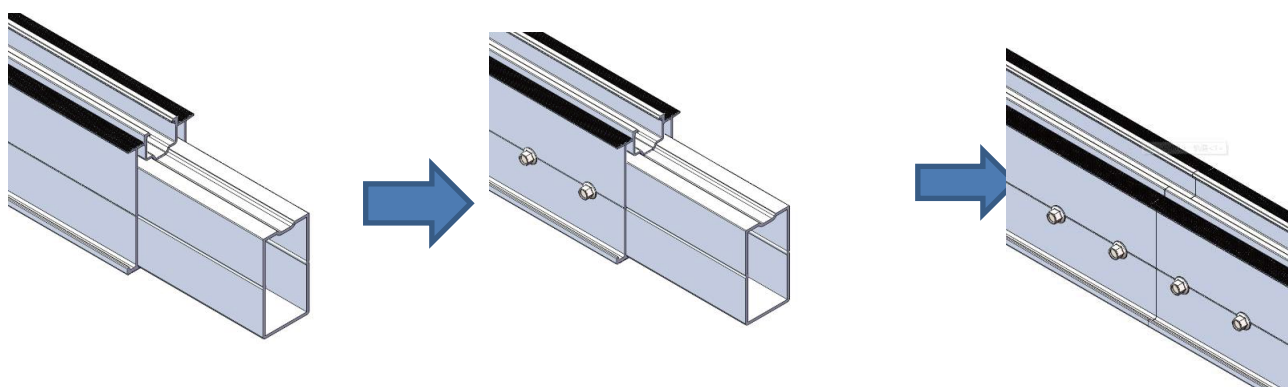


## Installing Cross Rail

Place the Rails onto main beam, fixed the rail with rail clamps.



Rail connect use ST5.5X19 tapping screw fixed"





## Installing Solar panel

