



Lithium-Ion Energy Storage Battery



Sunpal Power Co., Ltd.

Tel: 86 551 6586 5992

Add: No. 398 Ganquan Road, Hefei, Anhui, China.

Email: info@sunpalpower.com

Web: www.sunpalpower.com





About Sunpal Group

Sunpal was founded in 2008 as a dedicated residential and commercial lithium iron phosphate battery producer by consolidating, their expertise in electrochemistry, power electronics and system integration to deliver reliable energy storage solutions globally.

We are humbled to contribute our know-how to our technologies and create a sustainable future for all. Sunpal always is here to take responsibility and always take the mission to liberate human energy sustainably.

We have always adhered to the development concept of "Smart energy powers your life", constantly pursued excellence through technological innovation, and is committed to becoming a global new energy industry leader.

Why Choose Us



Grow stable



Good Quality Market Choice



Time Proven



Partner ship



Highly Cost Effective



Global Markets & Partners

16+

Years Delivery Experience

120+

Contries Global Deliveries

120+

Partners In ESS Field

15+

Subsidiaries Worldwide

500000+

Global Residential ESS

13.5GWH+

Production Capacity

12-1500V

Flexible Battery Solution

80,000m²

Factory Area

Max.16pcs

Support parallel capacity

Our Cells Partner

CATL

CALB

EVE

SUNWODA

BYD

HTHIUM

HIGEE

REPT

国轩高科

HUAWEI

Our Compatible Inverter List

MEGAREVO

GROWATT

Deye

victtron energy

Sinexcel

SUNGROW

GanfengLithium

SOLAX POWER

KSTAR

solis

Advantages & Services

More Efficient

- Compact size with high energy density.
- Low energy consumption with high conversion ratio.

Smarter

- Optional LOT function with Bluetooth/4G/WLAN module.
- Realtime remote monitoring with friendly HMI.

More Reliable

- New Grade A cell with cycle life up to 10,000 times.
- Smart BMS with full function protection.

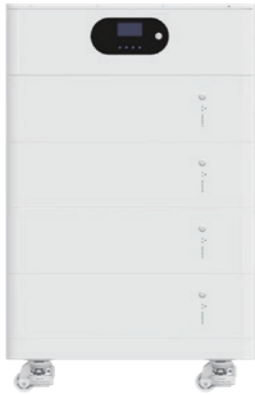
Easier Operation

- Most of the models Plug and Play design, fast commissioning.
- Engineer friendly maintenance design.

Technical Certificate



All In One Series Ess



All In One Series Ess
Capacity:5-10KWH



All In One Series Ess
Capacity:15-30KWH

Residential LP Series Ess



LP-Y1
Capacity:4.8-10KWH



LP-Y2
Capacity:2.56-10KWH



LP-Y3
Capacity:4.8-10KWH



LP-Y4
Capacity:5-15KWH



LP-F1
Capacity:14.3KWH



LP-F1
Capacity:16KWH



LP-E1
Capacity:4.8-10KWH

C&I LP Series Ess



LP-RH1
Capacity:14.4-38.4KWH



LP-RH2
Capacity:15.36-40.96KWH

Sunpal LP SERIES
Products List



LP-Y1 SERIES



Product Features

- Long Life And Safety**
6000 cycles with 80% DOD, high-quality prismatic battery cell

Backup Protection
Stores energy, detects outages and automatically becomes energy source

Intelligent
With independent smart BMS system, manages power output effectively

Plug In And Play
Plug in batteries then working, easy to install and set up

Compatibility
Compatible with most of the available Hybrid inverters

Safety Cert
EC62619,CE,UN38.3,MSDS
UL1642 STANDARD

LP-Y1 SERIES

Product Specifications		
Model	PP-Y1-5kWh	PP-Y1-10kWh
Voltage	48/51.2V	
Capacity	100Ah	200Ah
Battery Cell	3.2V 100Ah Pirsmatic Battery Cell	
Configuration	15S/16S 1	15S/16S 2P
Parallel Capacity	Yes,15units maximum	
Max.Charge Current	0.5C	
Max.Discharge Current	1C	
Discharge Cut-off Protect Voltage	42V/44.8V	
Charge Cut-off Protect Voltage	54V/57.6V	
Cycle life	6500 Cycles @90% DOD	
Communication Port	CAN,RS485,RS232	
L×W×H(mm)	680×485×180(220)mm	
Weight(KG)	68Kg±1Kg/72Kg±1K9	98Kg±1Kg/106Kg±1Kg
Discharge Temperature(°C)	-20~50°C	
Charge Temperature(°C)	0~55°C	
Lithium Battery Standard	UL1642/IEC62619/UN38.3/ROHS/CE-EMC	



LP-Y2 SERIES



Product Features

- Long Life And Safety**
6000 cycles with 80% DOD, high-quality prismatic battery cell

Backup Protection
Stores energy, detects outages and automatically becomes energy source

Intelligent
With independent smart BMS system, manages power output effectively

Plug In And Play
Plug in batteries then working, easy to install and set up

Compatibility
Compatible with most of the available Hybrid inverters

Safety Cert
EC62619,CE,UN38.3,MSDS UL1642 STANDARD

LP-Y2 SERIES

Product Specifications				
Model	PP-Y2-5kWh / PP-Y2-10kWh			
Cells In Series	15S		16S	
Rated Energy (KWh)	4.8	9.6	5.12	10.24
Rated Voltage (V)	48		51.2	
Charging Voltage (V)	54.75		58.4	
Discharge Cut-off Voltage (V)	40		42	
Standard Charge Current (A)	20	40	20	40
Maximum Charging Current (A)	0.5C		0.5C	
Maximum Discharge Current (A)	1C		1C	
Cycle Life	≥ 6500 times @ 90% DOD, 25 °C		≥ 6500 times @ 90% DOD, 25 °C	
Methods Of Communication	RS232/RS485/CAN		RS232/RS485/CAN	
Charging Temperature	0~60°C		0~60°C	
Discharge Temperature	-10~65°C		-10~65°C	
How It Is Displayed	LCD display		LCD display	
IP Protection	IP 21		IP 21	
Product Dimensions (L×W×Hmm)	440×186×560	450×244×670	440×186×560	450×244×670
Net Weight (Kg)	41	85	43	89
Packing Dimensions (L×W×Hmm)	632×512×255	755×525×450	632×512×255	755×525×450
Gross Weight (Kg)	43	100	45	104



LP-Y3 SERIES



LP-Y3 SERIES

Product Specifications				
Model	PP-Y3-5kWh / PP-Y3-10kWh			
Cells In Series	15S		16S	
Rated Energy (KWh)	4.8	9.6	5.12	10.24
Rated Voltage (V)	48		51.2	
Charging Voltage (V)	54.75		58.4	
Discharge Cut-off Voltage (V)	40		42	
Standard Charge Current (A)	20	40	20	40
Maximum Charging Current (A)	0.5C		0.5C	
Maximum Discharge Current (A)	1C		1C	
Cycle Life	≥ 6500 times @ 90% DOD 25°C		≥ 6500 times @ 90% DOD 25°C	
Methods Of Communication	RS232/RS485/CAN		RS232/RS485/CAN	
Charging Temperature	0~60°C		0~60°C	
Discharge Temperature	-10~65°C		-10~65°C	
How It Is Displayed	LCD display		LCD display	
IP Protection	IP 21		IP 21	
Product Dimensions (L×W×Hmm)	440×150×560	520×150×680	440×150×560	520×150×680
Net Weight (Kg)	42	76	44	80
Packing Dimensions (L×W×Hmm)	525×340×645	595×316×755	525×340×645	595×316×755
Gross Weight (Kg)	48	94	50	98

Product Features

- Long Life And Safety**
6000 cycles with 80% DOD, high-quality prismatic battery cell
- Backup Protection**
Stores energy, detects outages and automatically becomes energy source
- Intelligent**
With independent smart BMS system, manages power output effectively
- Plug In And Play**
Plug in batteries then working, easy to install and set up
- Compatibility**
Compatible with most of the available Hybrid inverters
- Safety Cert**
EC62619,CE,UN38.3,MSDS UL1642 STANDARD



LP-Y4 SERIES



Product Features

- Long Life And Safety**
6000 cycles with 80% DOD, high-quality prismatic battery cell

Backup Protection
Stores energy, detects outages and automatically becomes energy source

Intelligent
With independent smart BMS system, manages power output effectively

Plug In And Play
Plug in batteries then working, easy to install and set up

Compatibility
Compatible with most of the available Hybrid inverters

Safety Cert
EC62619,CE,UN38.3,MSDS
UL1642 STANDARD

LP-Y4 SERIES

Product Specifications				
Model	PP-Y4-5kWh	PP-Y4-10kWh	PP-Y4-15kWh	
Rated Voltage	51.2V		51.2V	
Rated Capacity(C5)	100Ah	200Ah	280Ah	314Ah
Battery Cell	3.2V 100Ah Prismatic Battery Cell		3.2V 280Ah Prismatic Battery Cell	3.2V 314Ah Prismatic Battery Cell
Configuration	16S1P	16S2P	16S1P	
Parallel Capacity	Yes,15units maximum		Yes,15units maximum	
Max.Charge Current/3s	0.5C	0.5C	0.5C	0.5C
Continuous Discharge Current	1C	1C	1C	1C
Discharge Cut-off Protect Voltage	44.8V		44.8V	
Charge Cut-off Protect Voltage	57.60V		57.6V	
Cycle Life	6500 cycles@90%DOD,0.2C,SOH80%		6500 cycles@90%DOD,0.2C,SOH80%	
Communication Port	Can,RS485,RS232		Can,RS485,RS232	
L×W×H(mm)	440×500×142	442×820×142	660×820×239	
Weight(kg)	49kg	98kg	122kg	125kg
Protection Rating	IP21(Indoor)		IP21(Indoor)	
Installation	Wall mounted		Wall mounted	
Discharge Temperature(°C)	-20~60		-20~60	
Charge Temperature(°C)	0~55		0~55	
Lithium Battery Standard	UL1642/IEC62619/UN38.3/ROHS/CE-EMC		UL1642/IEC62619/UN38.3/ROHS/CE-EMC	



LP-E1 SERIES



LP-E1 SERIES

Product Specifications		
Model	PP-E1-5kWh	PP-E1-10kWh
Voltage	48/51.2V	
Capacity	100Ah	200Ah
Battery Cell	3.2V 100Ah Pirsmatic Battery Cell	
Configuration	15S/16S 1P	15S/16S 2P
Parallel Capacity	Yes,15units maximum	
Max.Charge Current	0.5C	
Max.Discharge Current	1C	
Charge Cut-off Protect Voltage	54V/57.6V	
Disharge Cut-off Protect Voltage	42V/44.8V	
Design life	15+ Years (25°C/77°F)	
Cycle life	> 6500 Cycles, 25°C	
Communication Port	CAN, RS485, RS232	
Size (L×W×H)	460×442×180mm	680×442×180mm
Weight	46Kg±1 Kg/50Kg±1Kg	85Kg±1 Kg/89Kg±1Kg
Operation Temperature Range	Charge:0~55°C/Discharge:-20~55°C	

Product Features

- Long Life And Safety**
6000 cycles with 80% DOD,
high-quality prismatic battery cell
- Backup Protection**
Stores energy, detects outages and
automatically pecomes energy source
- Intelligent**
With independent smart BMS system,
manages power output effectively
- Plug In And Play**
Plug in batteries then working,
easy to install and set up
- Compatibility**
Compatible with most of the available
Hybrid inverters
- Safety Cert**
EC62619,CE,UN38.3,MSDS
UL1642 STANDARD



LP-F1 SERIES



Product Features

- Long Life And Safety**
6000 cycles with 80% DOD, high-quality prismatic battery cell

Backup Protection
Stores energy, detects outages and automatically becomes energy source

Intelligent
With independent smart BMS system, manages power output effectively

Plug In And Play
Plug in batteries then working, easy to install and set up

Compatibility
Compatible with most of the available Hybrid inverters

Safety Cert
EC62619,CE,UN38.3,MSDS UL1642 STANDARD

LP-F1 SERIES

Product Specifications		
Model	PP-F1-15kWh	PP-F1-16kWh
Cells In Series	16S	16S
Rated Energy (KWh)	14.3	16
Rated Voltage (V)	51.2	51.2
Charging Voltage (V)	58.4	58.4
Discharge Cut-off Voltage (V)	42	42
Standard Charge Current (A)	50	50
Maximum Charging Current (A)	0.5C	0.5C
Maximum Discharge Current (A)	1C	1C
Cycle Life	≥ 6500times@90%DOD,25°C	≥ 6500times@90%DOD,25°C
Methods Of Communication	RS232/RS485/CAN	RS232/RS485/CAN
Charging Temperature	0~60°C	0~60°C
Discharge Temperature	-10~65°C	-10~65°C
How It Is Displayed	LCD display	LCD display
IP Protection	IP 21	IP 21
Product Dimensions (L×W×Hmm)	580×280×800	550×290×850
Net Weight (Kg)	124.2	132.4
Packing Dimensions (L×W×Hmm)	700×495×900	950×705×615
Gross Weight (Kg)	142.7	153



LP-RH1 SERIES



14.4-38.4KWH



Product Features

- Long Life And Safety**
6000 cycles with 80% DOD,
high-quality prismatic battery cell
- Backup Protection**
Stores energy, detects outages and
automatically becomes energy source
- Intelligent**
With independent smart BMS system,
manages power output effectively
- Plug In And Play**
Plug in batteries then working,
easy to install and set up
- Compatibility**
Compatible with most of the available
Hybrid inverters
- Safety Cert**
EC62619,CE,UN38.3,MSDS
UL1642 STANDARD

LP-RH1 SERIES

Product Specifications						
Model	PP-RH1-15/20/24/29/34/39kWh					
Number of Modules	3	4	5	6	7	8
Battery Capacity	100Ah	100Ah	100Ah	100Ah	100Ah	100Ah
Battery Energy	14.4KWh	19.2KWh	24KWh	28.8KWh	33.6KWh	38.4KWh
Size(LxWxH)mm	570x380x833	570x380x1000	570x380x1167	570x380x1334	570x380x1501	570x380x1668
Weight	148Kg	189Kg	230Kg	271Kg	312Kg	353Kg
Standard Charge Current	0.5C	0.5C	0.5C	0.5C	0.5C	0.5C
Standard Discharge Current	1C	1C	1C	1C	1C	1C
Battery Type	LFP					
Cycle Life	≥ 6500times@90%DOD,25°C					
Nominal Voltage	144V	192V	240V	288V	336V	384V
Operating Voltage Range	160-438V					
IP Protection	IP 54					
Installation	Floor installation					
Charging Temperature	0~60°C					
Discharge Temperature	-10~60°C					
BMS Monitoring Parameters	SOC, System voltage,current, cell voltage, cell temperature, PCBA temperature measurement					
Communication Port	RS485/CAN					
Waranty	5 or 10 years(optional)					



LP-RH2 SERIES



LP-RH2 SERIES

Product Specifications				
Model	PP-RH2-21/31/24/41/52kWh			
Number of Modules	4	6	8	10
Battery Capacity	100Ah	100Ah	100Ah	100Ah
Battery Energy	20.48KWh	30.72KWh	40.96KWh	51.2KWh
Size(LxWxH)mm	548x584x1500	548x584x1500	548x584x1950	548x584x2300
Weight	235Kg	384Kg	425Kg	510Kg
Standard Charge Current	0.5C	0.5C	0.5C	0.5C
Standard Discharge Current	1C	1C	1C	1C
Battery Type	LFP			
Cycle Life	≥ 6500times@90%DOD,25°C			
Nominal Voltage	204.8V	307.2V	409.6V	512V
Operating Voltage Range	160-584V			
IP Protection	IP 21			
Installation	Cabinet Holding			
Charging Temperature	0~60°C			
Discharge Temperature	-10~60°C			
BMS Monitoring Parameters	SOC, System voltage,current, cell voltage, cell temperature, PCBA temperature measurement			
Communication Port	RS485/CAN			
Waranty	5 or 10 years(optional)			

Product Features

- Long Life And Safety**
6000 cycles with 80% DOD,
high-quality prismatic battery cell
- Backup Protection**
Stores energy, detects outages and
automatically pecomes energy source
- Intelligent**
With independent smart BMS system,
manages power output effectively
- Plug In And Play**
Plug in batteries then working,
easy to install and set up
- Compatibility**
Compatible with most of the available
Hybrid inverters
- Safety Cert**
EC62619,CE,UN38.3,MSDS
UL1642 STANDARD



LP-ALL IN ONE SERIES



Product Features

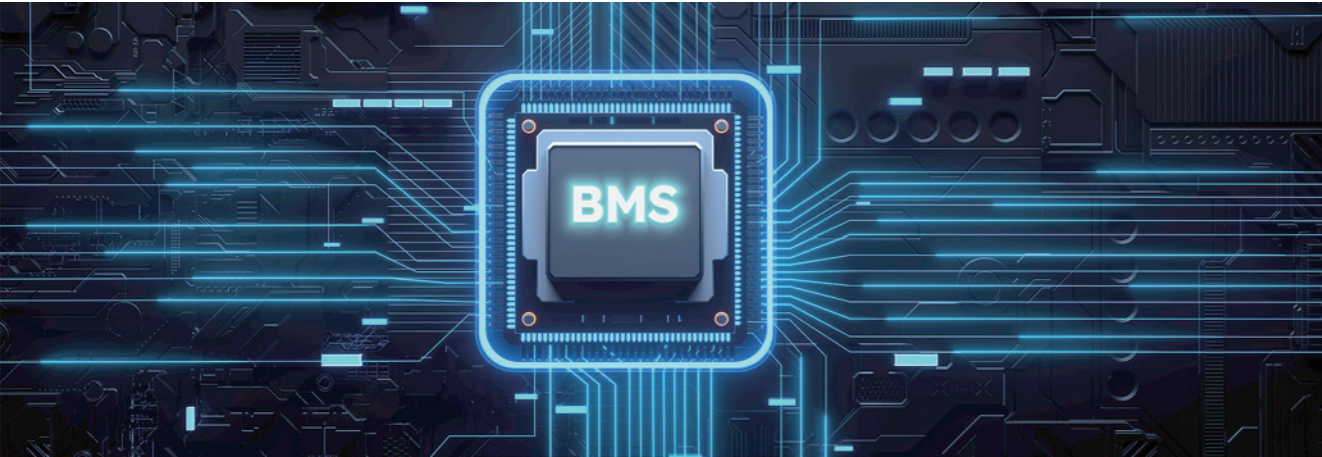
- Long Life And Safety**
6000 cycles with 80% DOD, high-quality prismatic battery cell
- Backup Protection**
Stores energy, detects outages and automatically becomes energy source
- Intelligent**
With independent smart BMS system, manages power output effectively
- Plug In And Play**
Plug in batteries then working, easy to install and set up
- Compatibility**
Compatible with most of the available Hybrid inverters
- Safety Cert**
EC62619,CE,UN38.3,MSDS
UL1642 STANDARD

LP-ALL IN ONE SERIES

Product Specifications		
Inverter module	PP-INV5KLP1-S5.0	PP-INV10KLP1-V5.0
Output		
Rated output power	5,000W	10,000W
Maximum peak power	10,000VA	20,000VA
Motor load capacity	6HP	6HP
Wave form	PSW (Pure Sine Wave)	PSW (Pure Sine Wave)
Rated output voltage	220V ac (Single Phase)	220V ac (Single Phase)
Maximum parallel capacity	2 units (Up to 10KW)	2 units (Up to 20KW)
Output mode	Off-grid/Hybrid	Off-grid/Hybrid
Solar input		
Types of solar charging	MPPT	MPPT
Maximum solar array power	5500W	5,500W+5500W
Maximum solar open-circuit voltage	500Vdc	500Vdc+500Vdc
Grid/generator inputs		
Input voltage range	90~280Vac	90~280Vac
Bypass overload current	63A	63A
Battery charging		
Maximum solar charging current	0.5C	0.5C
Maximum grid/generator charging current	1C	1C
Routine		
Dimensions (L×W×Hmm)	600×400×175	750×470×250
Weight (Kg)	~16	~32
Battery module		
Battery power	5.12KWh	15KWh
Rated voltage	51.2V	48V
Rated capacity	100Ah	280Ah
Battery type	Prismatic cell	Prismatic cell
Cycle life	≥6500 (90%DOD, 0.5C, 25°C)	≥6500(90%DOD,0.5C,25°C)
Maximum parallel capacity	6 units (Max. 30.7KWh)	4 units (Max. 53.76KWh)
Dimensions(LxWxHmm)	660×440×175	750x470x250
Weight (Kg)	~46	~115
Standard	UN38.3, MSDS, IEC62619:2017, EN IEC61000-3-2, EN IEC61000-6-1,RoHS	UN38.3, MSDS, IEC62619:2017, EN IEC61000-3-2, EN IEC61000-6-1,RoHS

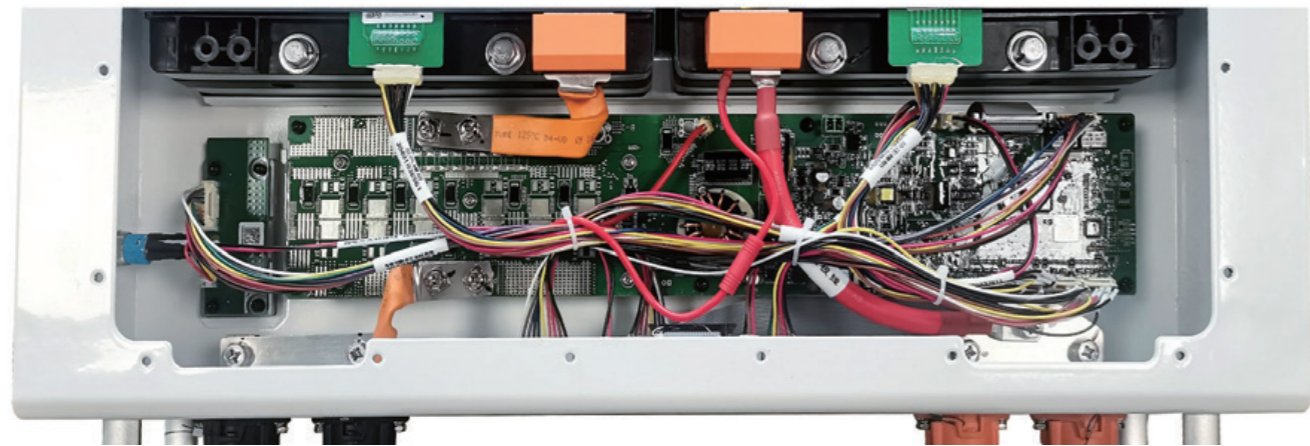
Battery Manager System(BMS)

LEADING SMART BMS,Developed & designed by BSLBATT



50A-300A Multiple discharge rate options

Over 40+ Adaptive inverter protocol selection



Detection & Control
Real-time monitoring of battery voltage, current,temperature and other parameters, and control according to the set parameter range.

Signal Processing
Receive control instructions from the external system and send battery status information, and process the received instructions and information.

Data Processing & Storage
Process and analyze the collected battery parameters,and record and store the battery's operating status and historical data.

Bluetooth, WiFi Function
Remote real-time monitoring, online parameter setting, OTA software upgrade.

APP Monitoring

Control and monitor the system,check the battery status



SUNPAL CLOUD



Dynamic Power Flow & Generation Report	Real-time Monitoring & Comprehensive Visualization	Multi-terminal Compatibility & Sharing
Remote OTA Upgrade Reduce Maintenance Costs	Integrated After-Sales Service	Backup Function & Data Encryption

Product line



Product



Installation



Exhibition Promotion

Munich Exhibition

2025/5



Manila Exhibition

2025/3



Dubai Exhibition

2025/4



Uzbekistan Exhibition

2024/10

