

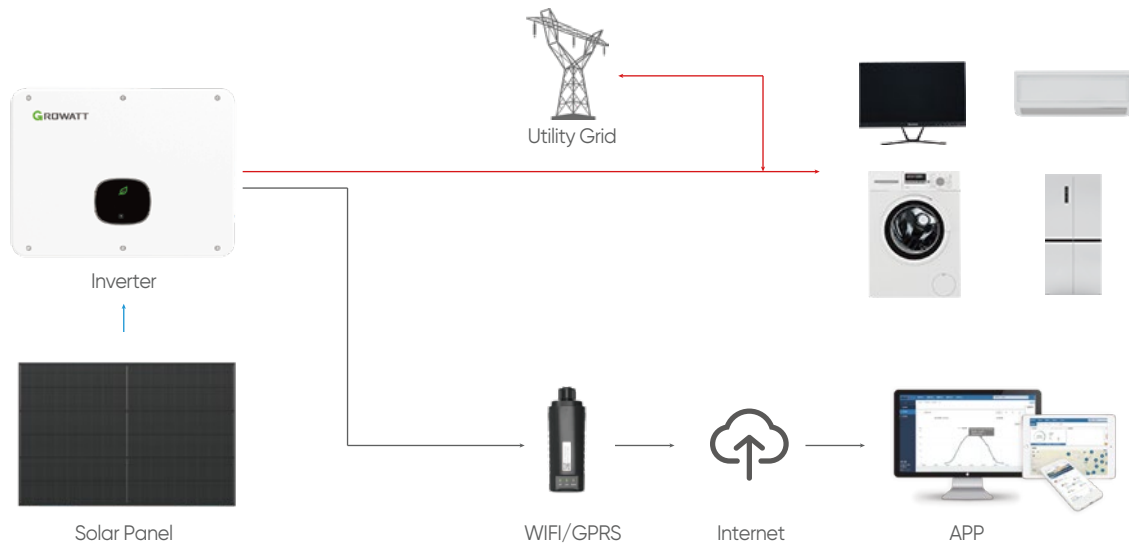
On Grid Solar System

EU Voltage

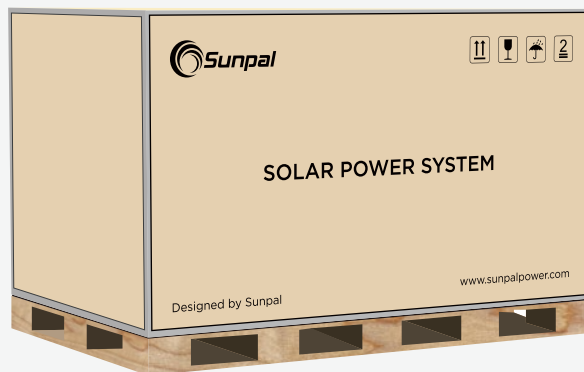
SP-20KW3-ON

SP-20KW3-ON

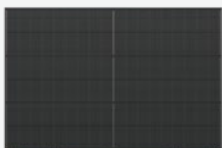
(Residential On Grid Solar System)



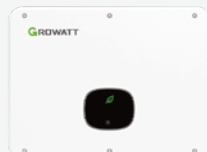
SOLAR SYSTEM KIT



Solar Panel



Solar Inverter



Wifi Monitor



PV Cable



MC4 Connector



Mounting Bracket



AC Switch(Optional)



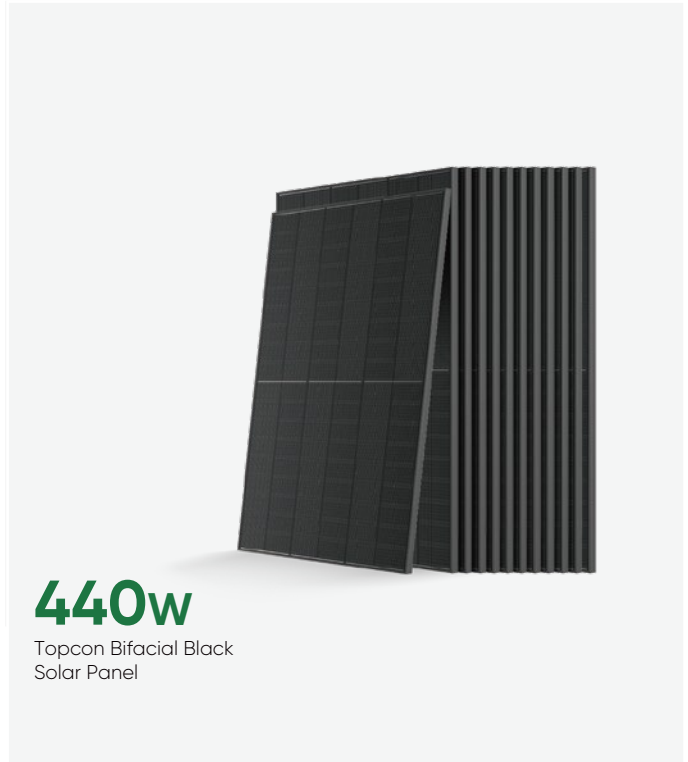
DC Switch(Optional)



PV Module

- Positive power tolerance (0~+5W) guaranteed
- Reduced resistive loss with lower operating current
- Higher energy yield with lower operating current
- Reduced hot spot risk with optimized electrical design and lower operating current

Parameter	
Testing Condition	STC
Maximum Power(Pmax/W)	440W
Open Circuit Voltage(Voc/V)	39.44
Short Circuit Current(Isc/A)	14.27
Voltage at Maximum Power(Vmp/V)	32.45
Current at Maximum Power(Imp/A)	13.56
Module Efficiency(%)	22.53



Inverter

Parameter	
Input Data (DC)	
Max. recommended PV power (for module STC)	30000W
MPPT voltage range	160V-1000V
No. of MPP trackers	2
No. of PV strings per MPP tracker	2
Output data (AC)	
AC nominal power	20000W
Nominal AC voltage (range*)	220V/380V, 230V/400V (340-440V)
AC grid frequency (range*)	50/60 Hz (45-55Hz/55-65 Hz)
General Data	
Dimensions (W / H / D)	525/395/222mm
Weight	23kg
Topology	Transformerless
Cooling	Natural convection
Protection degree	IP65

- Advanced MPPT with up to 99.9% efficiency
- Up to 6 units in parallel connection
- Easy to install and simple to use
- Supports Li-ion battery BMS communication





Solar
Systems

Sunpal Power Co., Ltd.

Add: NO.398 Ganquan Road, Hefei, China

Tel: +86 551 6586 5992

Email: info@sunpalpower.com

Web: www.sunpalpower.com